

Gardens and Gateways

by Anne Beidler

This body of new work explores connections between past and present experiences. It recalls the spiritual and emotional impact of journeys taken in Korea and China, especially visits to temples and gardens. It speaks metaphorically to the Chinese legend of the invisible Red Thread that connects people through time and distance. It explores the notion of stories that have been lost in time and histories that have been re-written.



Inspiration has come from poems by the Tang Dynasty (A.D. 618-907) poet, Han-Shan. Here translated by Burton Watson is poem #29:

I spur my horse past the ruined city;
The ruined city, that wakes the traveler's thoughts:
Ancient battlements, high and low;
Old grave mounds, great and small.
Where the shadow of the single tumbleweed trembles
And the voice of the great trees clings forever,
I sigh over all those common bones –
No roll of the immortals bears their names.

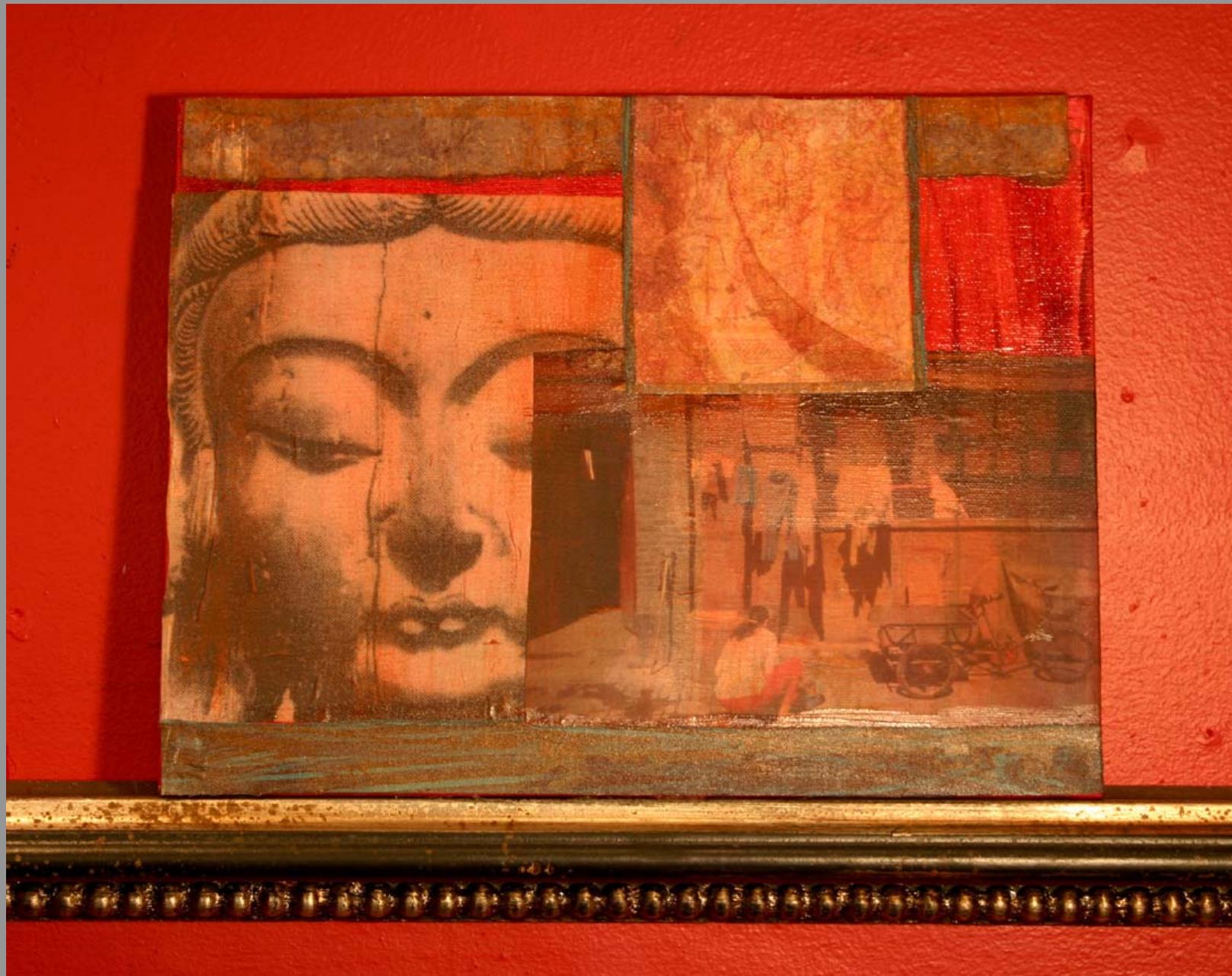
mixed media painting 2007 (9x9 inches)



mixed media painting installation (9x9 inches each)



mixed media painting, 2007 (11x14 inches)



mixed media print, 2006 (33x44 inches)



mixed media painting, 2007 (11x14 inches)



mixed media painting, 2006 (11x14 inches)



mixed media painting, 2007 (11x14 inches)



mixed media painting, 2006 (10x12 inches)



mixed media painting, 2007 (11x14 inches)

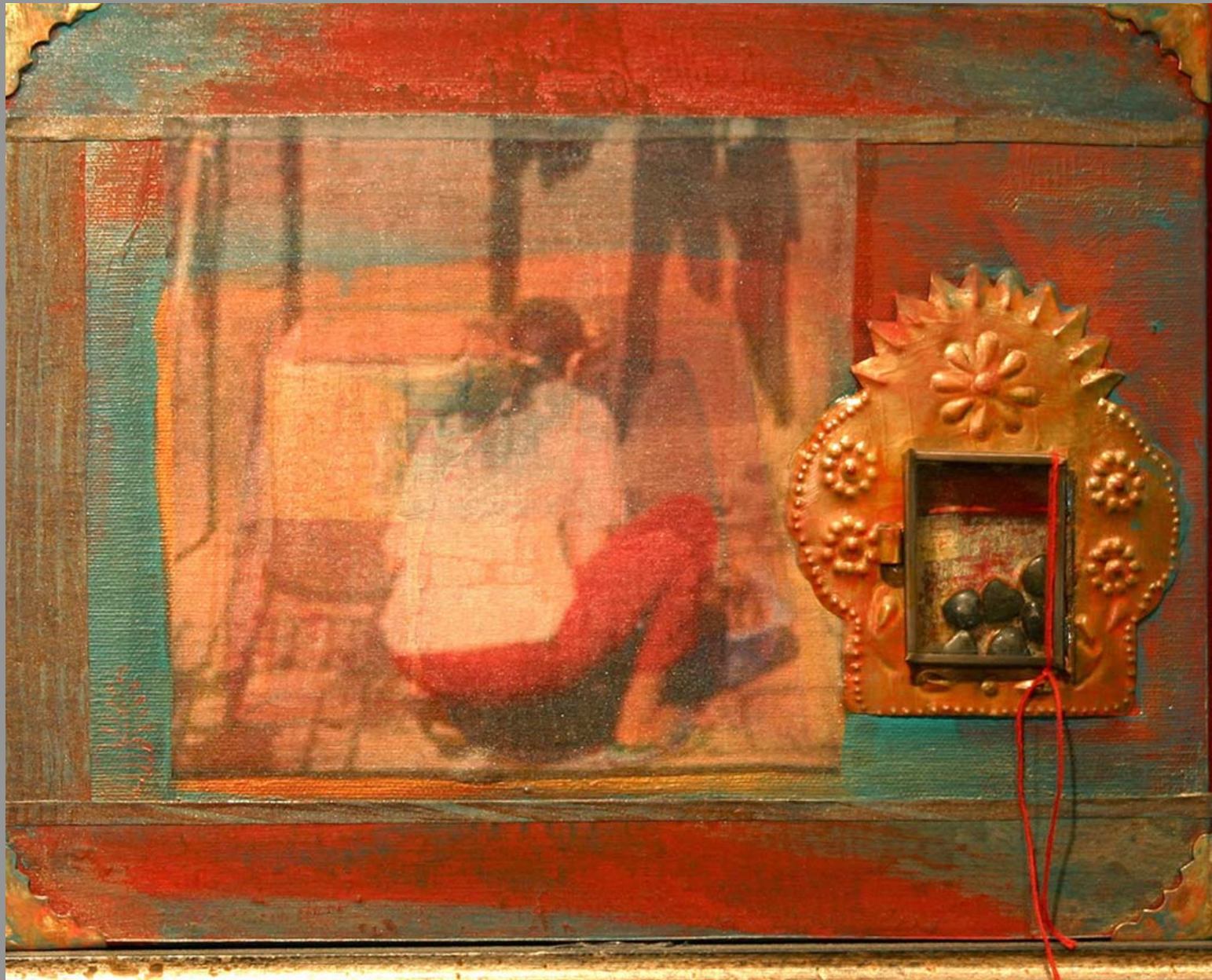




mixed media book installation, 2005
(35x48 inches)



mixed media painting, 2007 (11x14inches)



mixed media painting, 2007 (10x12 inches)



mixed media painting, 2008 (11x14 inches)



mixed media painting, 2006 (20x12)



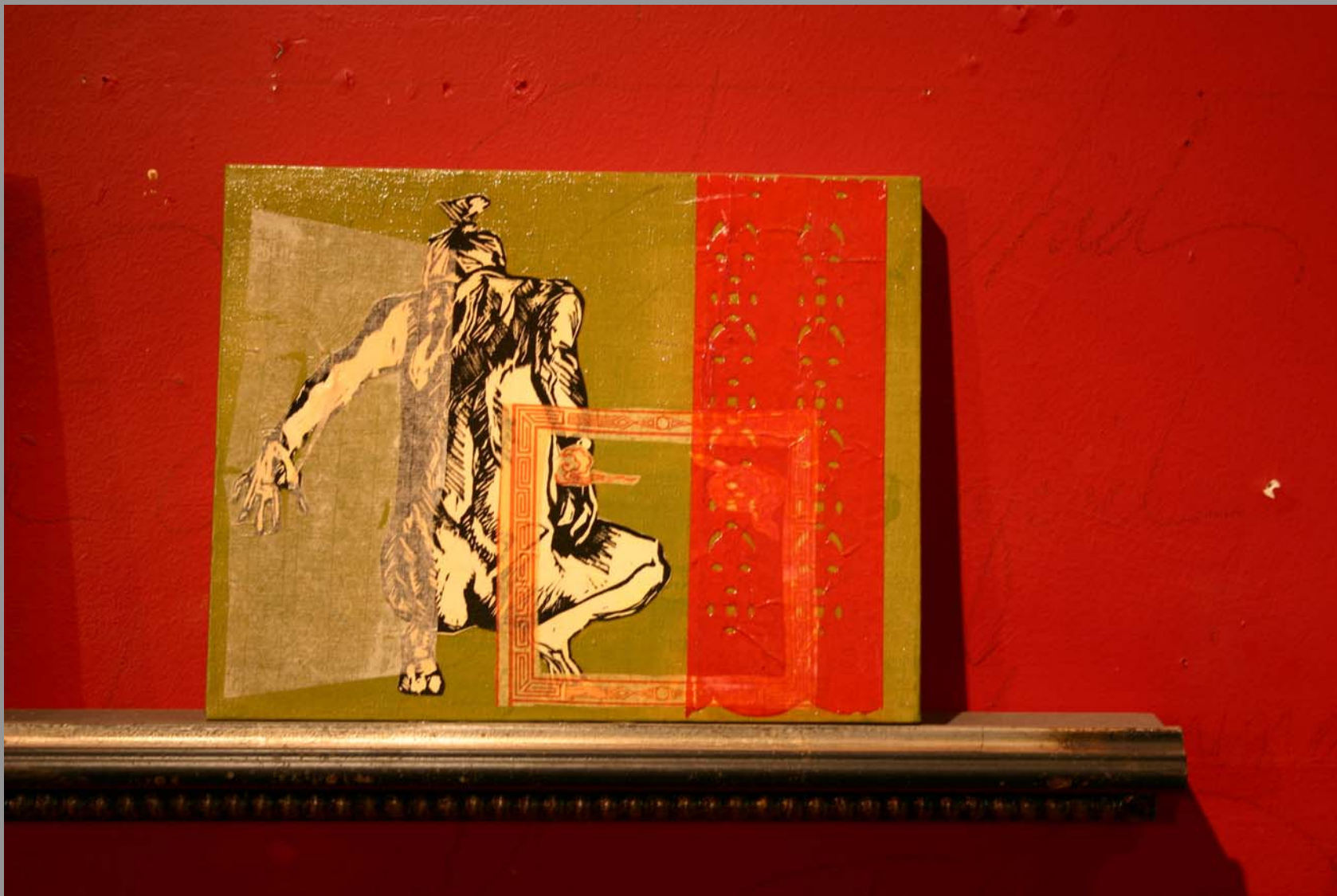
mixed media paintings, Red Wall installation, 2008



mixed media paintings, Red Wall installation, 2008



mixed media painting, Red Wall installation, 2008



mixed media painting, 2007 (11x14 inches)

